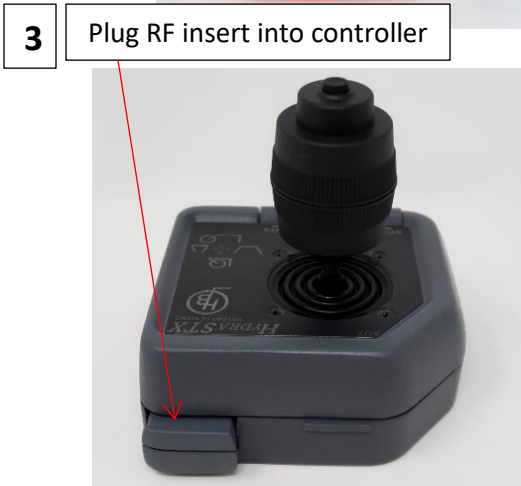
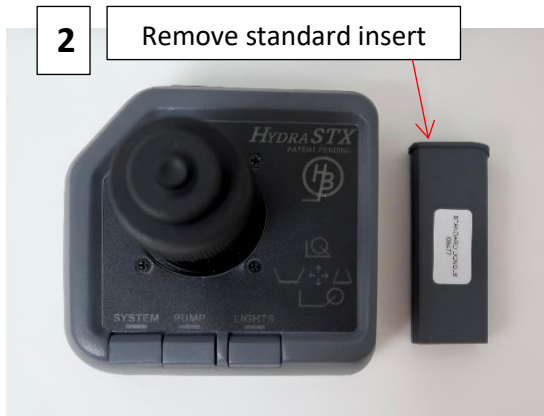


## HYDRASTX® RF Remote Installation Guidance

### Setup Instructions

1. Remove the RF Insert from the packaging
2. Unplug the standard insert from the In-Cab controller
3. Plug RF insert into In-Cab Controller



### Operating Guidance

1. "SYSTEM" alone will allow you to shift the HydraBed valve without the pump engaging.
2. "PUMP" can not be turned on alone with RF Remote. SYSTEM must be ON to turn PUMP ON
3. "SYSTEM" **AND** "PUMP" are required to operate the HydraBed normally
4. "LIGHTS" will be used to turn the work lights (*if equipped*) mounted to the headache rack ON/OFF

#### HydraBed Functions



Operate 3<sup>rd</sup> spool hydraulics

Turn Flashlight ON/OFF

